



FILTER CARTRIDGE FOR POWDER COATING APPLICATION

静电喷涂行业 专用滤筒

提高效能 · 降低成本

ENHANCE EFFICIENCY, SAVE COST

www.rhfilter.com



江苏人和环保设备有限公司

JIANGSU RENHE ENVIRONMENTAL EQUIPMENTS CO., LTD

地址：江苏省江阴市顾山北国解放工业园兴园路31号

邮编：214414

技术咨询：0510-86351180/86951118

销售热线：0510-86357203/86950900/86951203

传真：0510-86351997

邮件：rh@rhfilter.com

Add: No. 31 Xingyuan Road, Beiguo Industrial Park, Gushan Town, Jiangyin City,
Jiangsu Province, China. (Zip code: 214414)

Info :86-510-86951028

Fax :86-510-86351997

E-mail: oversea@rhfilter.com

www.rhfilter.com

江苏人和环保设备有限公司

JIANGSU RENHE ENVIRONMENTAL EQUIPMENTS CO., LTD

ABOUT US

关于我们

江苏人和环保设备有限公司依托苏南地区特有的优势, 建立生产和技术开发基地。座落于全国百强县—江阴市北国工业园区, 南靠中国华西村, 北连全国文明城市—张家港, 距离沿江高速公路仅1公里。

江苏人和环保设备有限公司是一家专业从事空气入口过滤和除尘回收过滤产品及备件研发、设计、制造、销售及安装服务于一体的省高新技术企业。

公司已经成为国内专业的除尘器及滤筒生产商。公司引进先进的生产技术及设备, 拥有12条滤筒生产线, 除尘器加工采用先进的激光切割, 数控折边, 夹具组装工艺。产品核心滤材进口自美国、日本、欧洲, 与全球顶尖滤材厂商建立了长期的合作关系。公司建立了完善的ISO9001--2008标准的质量体系, 严格按照滤筒除尘器标准(JB/T 10341-2014), 空气过滤器标准(GB/T14295-2008), 滤筒企业标准(Q/320281BBY01-2018)。公司产品销往全国各地, 已出口六十多个国家和地区, 广泛应用于钢铁、石化、电力、造船、航空、集装箱、烟草、橡胶、机械制造、陶瓷、木材加工、汽车、特种粉体、有色金属、矿业、煤炭、冶金等。

人和品牌滤筒在喷粉行业主要应用于: 铝型材, 家用电器, 汽车零部件, 通讯器材, 金属家具, 电气柜, 精密五金, 电梯等等!

公司致力于环保产业, 以“创造更加洁净的生产和生活空间”为宗旨。奉行"互助, 平衡, 奉献, 创新"的企业文化, 为国内外客户提供最优质的服务。

Jiangsu Renhe Environmental Equipments Co., Ltd. (Hereafter mention as “Renhe”) is a professional manufacturer of dust collector, air intake filter, and their accessories, with location in Jiangyin City, Jiangsu Province, the nearest seaport is Shanghai seaport.

Founded in 2006, introduced advanced production technology and facility, Renhe now develops with 12 filter cartridge production lines, dust collector manufacture technique is laser cutting, CNC bending, jig welding assemble.

Filter cartridge heart is filter media, Renhe sources from Japan, America, Europe, and build long-term partnership with world top filter media manufacturers.

Renhe is ISO9001 certified, products manufacturing is in accordance with cartridge dust collector code (JB/T10341-2014), air filter code (GB/T14295-2008), filter cartridge enterprise code (Q/320281BBY01-2018).

Renhe filtration products have been supplying for all over China, and have been exporting to over 60 countries

Renhe filter cartridges are widely applied in the powder coating application, whose industries are as follows:Aluminum profile, White appliance,Vehicle parts,Tele- communication facility,Metal furniture,Electrical control cabinet,Precision hardware,Elevator, etc.

Renhe is dedicate to environmental protection industry, with tenet of “Improving working and living air quality”, with culture of “Cooperation, Harmony, dedication, innovation”, to provide good products and service to customers at home and abroad.



PTFE Membrane

Filter Media Introduction

覆膜滤材介绍

进口覆膜滤材 特点

Import PTFE Membrane Filter Media Feature

● 热电融合 Thermoelectricity fuse PTFE Membrane technique	● 多孔 Porous	● 超细纤维 / 小孔径 Superfine fiber / Tiny pore	● 超光滑 & 不粘性 Super smooth & Non-sticky performance	● 超薄 Ultra-thin
● 牢固不脱落 PTFE Membrane is firm, and won't drop off	● 亲油性(粉尘不能含有油) Lipophilicity (The dust cannot contain oil)	● 稳定的化学性质 Stable chemical property	● 保持了良好的透气性 Maintained good air permeability	● 表面过滤原理 Surface filtration
● 出众的清灰效果 Outstanding dust cleaning effect	● 疏水性 Hydrophobicity	● 蒸汽穿透性 Steam penetration	● 热稳定性 Thermal stability	

国产覆膜滤材与进口材料相比

Compared with Import PTFE Membrane, the local PTFE Membrane filter media is

● 胶水粘合 PTFE Membrane is glue bond	● 阻力比进口覆膜大很多 Resistance is higher	● 膜容易脱落 PTFE Membrane is not as firm as import one	● 热稳定性能差 Poor thermal stability	● 化学稳定性能差 Poor chemical stability
● 精度偏低 Lower filter efficiency	● 使用寿命短 Shorter service life	● 透气度差 Poor air permeability		

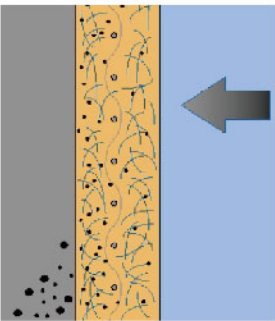
覆膜滤材的优特点

PTFE Membrane Filter Media Advantage

● 表面过滤原理 Surface filtration	● 过滤效率高 High filter efficiency	● 容易清灰 Dust clean is easy	● 初始阻力低 Low initial resistance	● 低阻力运行 Low DP operation	● 节约能耗 Save energy consumption
--------------------------------	-----------------------------------	------------------------------	-----------------------------------	-----------------------------	-----------------------------------

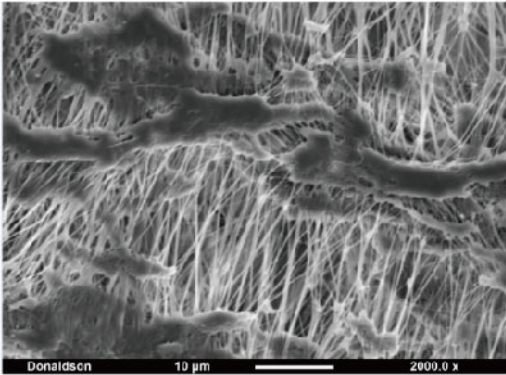
普通滤材过滤原理

Conventional filter media filtration principle



PTFE 覆膜对比

PTFE Membrane Comparison

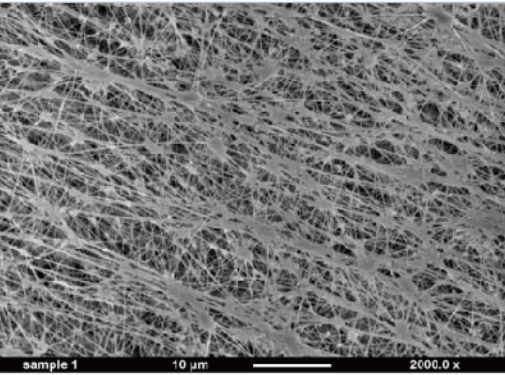
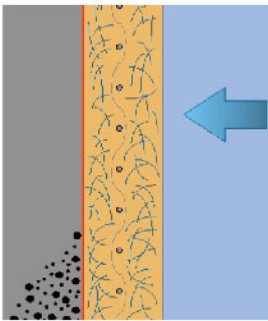


进口覆膜

Import PTFE Membrane Filter Media

覆膜滤材过滤原理

PTFE Membrane filter media filtration principle



其他厂家覆膜滤材

Other Manufacturer PTFE Membrane Filter Media

Filter Cartridge Introduction

滤筒介绍



滤筒型号 Model	过滤介质 Filter Media	上盖外径A Top Cap OD A	上盖外径B Top Cap OD B	上盖外径C Top Cap OD C	安装小孔D Mount hole D	高度L Height
RH/P3260	长纤维聚酯 Spun bond polyester 长纤维聚酯作防静电处理 Polyester with Antistatic	324mm	324mm	213mm	14mm/--	600mm
RH/F3266	长纤维聚酯+PTFE处理 Polyester with PTFE Membrane	324mm	324mm	213mm	14mm/--	600mm
RH/Z3266	复合纤维 Cellulose blend polyester 纳米纤维 Cellulose blend polyester with Nanoweb	324mm	324mm	213mm	14mm/--	660mm
RH/P3266	长纤维聚酯 Spun bond polyester 长纤维聚酯作防静电处理 Polyester with Antistatic	324mm	324mm	213mm	14mm/--	660mm
RH/F3266	长纤维聚酯+PTFE处理 Polyester with PTFE Membrane	324mm	324mm	213mm	14mm/--	660mm
RH/Z32915	复合纤维 Cellulose blend polyester 纳米纤维 Cellulose blend polyester with Nanoweb	324mm	324mm	213mm	14mm/--	915mm
RH/P32915	长纤维聚酯 Spun bond polyester 长纤维聚酯作防静电处理 Polyester with Antistatic	324mm	324mm	213mm	14mm/--	915mm
RH/F32100	长纤维聚酯+PTFE处理 Polyester with PTFE Membrane	324mm	324mm	213mm	14mm/--	1000mm
备注: 适用机型: 金马、瓦格纳、诺信等 Remark: Fit GEMA, Wagner, Nordson, etc. booth filtration use						

Rotary Wing, Nozzle, Powder Pipe, HEPA

旋转翼、喷嘴、粉管、高效过滤器

